



M3
MACH



M5
MACH

PISTOLE ALTA PRESSIONE MISTO ARIA
AIR-ASSISTED AIRLESS HIGH PRESSURE SPRAY GUNS

PER VERNICIATURA PROFESSIONALE/ FOR PROFESSIONAL PAINT SPRAYING

MACH3 - PISTOLA MANUALE/ MANUAL SPRAY GUN

Pistola manuale alta pressione misto aria. Progettata per ottimizzare l'efficienza e la qualità, è applicabile alle nostre pompe e a quelle delle principali marche del settore ed è ideale per le applicazioni sul metallo generico e sui prodotti in legno. Inoltre è compatibile con le testine ad aria ed ugelli delle principali marche del settore presenti sul mercato globale.

Manual air-assisted airless spray gun. Designed to improve the application and quality, can be installed to our pumps and to the pumps of the main brand available in the sector, and it is suitable for spraying applications in the metal and wood finishing industry. Furthermore it's compatible with the air caps and nozzles of the main brands available in this sector.

Pressione massima d'esercizio del fluido/ <i>Maximum Working Fluid Pressure</i>	200 bar, 20 MPa (2900 psi)
Pressione massima d'esercizio dell'aria/ <i>Maximum Working Air Pressure</i>	7 bar, 0,7 MPa (100 psi)
Massima temperatura di esercizio del fluido/ <i>Maximum Working Fluid Temperature</i>	43° C
Ingresso fluido/ <i>Fluid Inlet</i>	1/4" nps
Ingresso aria/ <i>Air Inlet</i>	1/4" nps
Peso della pistola con porta filtro/ <i>Gun Weight with filter holder</i>	520 gr
Corpo della pistola/ <i>Gun Body</i>	Alluminio forgiato/ <i>Alluminium</i>
Resistenza grilletto/ <i>Trigger Resistance</i>	17.35 N
Parti a contatto con il fluido/ <i>Wetted Parts</i>	Acciaio inossidabile, carburo, PTFE/ <i>Stainless steel, carbide, PTFE</i>



VANTAGGI/ADVANTAGES:

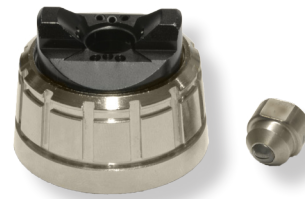
- Finitura di qualità/ *high quality finishing*
- Copertura omogena/ *even coverage*
- Spruzzatura a getto uniforme/ *uniform jet spraying*
- Velocità di applicazione e facilità di utilizzo/ *quick application*
- Migliore qualità di atomizzazione/ *better atomizing quality*



QUALITÀ, PERFORMANCE, DURATA
QUALITY, PERFORMANCE, DURABILITY



BERIZZI



CE Ex II 2GT6 X

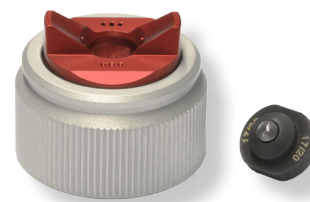
TECHNICAL DATA

CODE	DESCRIPTION
TT1001	Mach3 gun + filter holder + nozzle TT1 + air cap TT1
FM63000	Stainless steel filter holder inlet 1/4"BSP
TT1MIX	Air cap for nozzle Mix TT1
TTUXXX	Nozzle Mix TT1

COMPATIBILE CON LE SEGUENTI MARCHE:
COMPATIBLE WITH THE FOLLOWING BRANDS:



WAGNER



CE Ex II 2GT6 X

TECHNICAL DATA

CODE	DESCRIPTION
TT1001W	Mach3 gun + filter holder + nozzle WGM + air cap WGM
TT1MIXW	Air cap for nozzle type Mix Wagner
WGMXXXX	Nozzle Mix type Wagner



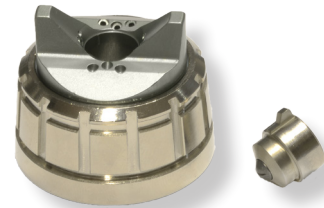
CE  II 2GT6 X

TECHNICAL DATA

CODE	DESCRIPTION
TT1001K	Mach3 gun + filter holder + nozzle + air cap
TT1MIXK	Air cap for nozzle
BRZ4	Nozzle Mix



GRACO



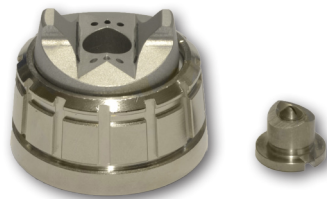
CE  II 2GT6 X

TECHNICAL DATA

CODE	DESCRIPTION
TT1001G	Mach3 gun + filter holder + nozzle GWN + air cap GWN
TT1MIXG	Air cap for nozzle type Mix Graco
GWNXXX	Nozzle Mix type Graco



OPTIMA 20



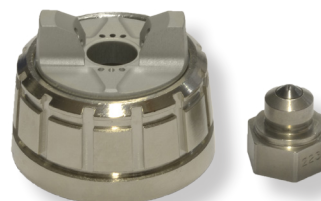
CE  II 2GT6 X

TECHNICAL DATA

CODE	DESCRIPTION
TT1001ON	Mach3 gun + filter holder + nozzle ON + air cap ON
TT1MIXON	Air cap for nozzle type Optima 2000
ONXXXX	Nozzle Mix type Optima 2000



OPTIMA 21



CE  II 2GT6 X


TECHNICAL DATA

CODE	DESCRIPTION
TT1001OPN	Mach3 gun + filter holder + nozzle OPN + air cap OPN
TT1MIXOPN	Air cap for nozzle Mix type Optima 2100
OPNXXX	Nozzle Mix type Optima 2100

con UGELLO REVERSIBILE with REVERSIBLE TIP

UGELLI REVERSIBILI
REVERSIBLE TIPS



CE  II 2GT6 X

TECHNICAL DATA

CODE	DESCRIPTION
TT1201	Mach3 gun + filter holder + Tip + Tip Guard
FM63000	Stainless steel filter holder inlet 1/4" BSP
201305	Guard for reversible tip
FMC6XXX	Reversible tip FMC6 Fine Finish
201204	Tip guard repair kit



BASE UGELLO
TIP GUARD

FACILE da PULIRE
EASY TO CLEAN

MACH5 - PISTOLA AUTOMATICA/ AUTOMATIC SPRAY GUN

Pistola automatica alta pressione misto aria. Progettata per ottimizzare l'efficienza e la qualità, è applicabile alle nostre pompe e a quelle delle principali marche del settore ed è ideale per le applicazioni sul metallo generico e sui prodotti in legno. Mach5 è in grado di garantire una massima efficienza di trasferimento, alta qualità di finitura e velocità produttiva su grandi superfici dove è richiesto un alto spessore di rivestimento. Inoltre è compatibile con le testine ad aria ed ugelli delle principali marche del settore presenti sul mercato globale. Ogni pistola ha un apposito kit di riparazione in grado di garantire ottime condizioni di lavoro, ottenendo sempre la migliore spruzzatura e resa.

Automatic air-assisted airless high pressure spray gun. Designed to improve the application and quality, can be installed to our pumps and to the pumps of the main brand available in the sector, and it is suitable for spraying applications in the metal and wood finishing industry. Mach5 is able to guarantee maximum transfer efficiency, high finishing quality and production speed on large surfaces where high coating thickness is required. It's compatible with the air caps and nozzles of the main brands available in this sector. Each gun has a dedicated repair kit that allows to keep the gun in the best working conditions providing the best finishing performances.

Pressione massima d'esercizio del fluido/ 200 bar/ 20 MPa (2900 psi)
Maximum Working Fluid Pressure

Pressione massima d'esercizio dell'aria/ 7 bar/ 7 MPa (100 psi)
Maximum Working Air Pressure

Massima temperatura di esercizio del fluido/ 63° C
Maximum Working Fluid Temperature

Ingresso fluido/ Fluid Inlet 1/4" nps

Ingresso aria/ Air Inlet 1/4" nps

Peso della pistola con porta filtro/ 980 gr
Gun Weight with filter holder

Corpo della pistola/ Gun Body Acciaio inossidabile/ Stainless steel

Parti a contatto con il fluido/ Wetted Parts Acciaio inossidabile, carburo, PTFE/ Stainless steel, carbide, PTFE



CODE	DESCRIPTION
TT1301	Automatic Air Assisted Gun Mach 5 + Nozzle + Air cap
TT1MIX	Air cap for nozzle Mix TT1
TTUXXX	Nozzle Mix type TT1
TTK4058	Repair kit



VANTAGGI/ADVANTAGES:

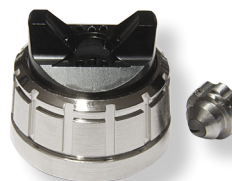
- Finitura di qualità/ *high quality finishing*
- Copertura omogenea/ *even coverage*
- Spruzzatura a getto uniforme/ *uniform jet spraying*
- Velocità di applicazione e facilità di utilizzo/ *quick application*
- Migliore qualità di atomizzazione/ *better atomizing quality*


COMPATIBILE CON LE SEGUENTI MARCHE:
COMPATIBLE WITH THE FOLLOWING BRANDS:

TECHNICAL DATA



CODE	DESCRIPTION
TT1301K	Automatic Air Assisted Gun Mach 5 + Nozzle + Air cap
TT1MIXK	Air cap for nozzle Mix
BRZ4	Nozzle Mix
TTK4058	Repair kit



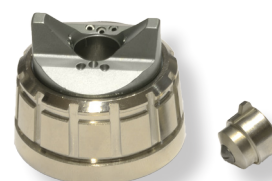
CE  II 2GT6 X


GRACO

TECHNICAL DATA



CODE	DESCRIPTION
TT1301G	Automatic Air Assisted Gun Mach 5 + Nozzle GWN +Air cap GWN
TT1MIXG	Air cap for nozzle Mix type Graco
GWNXXX	Nozzle Mix type Graco
TTK4058	Repair kit



CE  II 2GT6 X

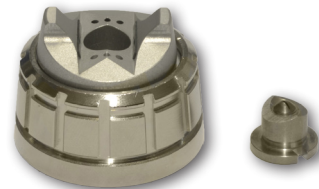
OPTIMA 20



CE  II 2GT6 X

TECHNICAL DATA

CODE	DESCRIPTION
TT1301ON	Automatic Air Assisted Gun Mach 5 + Nozzle ON + Air cap ON
TT1MIXON	Air cap for nozzle type Optima 2000
ONXXXX	Nozzle Mix type Optima 2000
TTK40580	Repair kit ON-OPN version



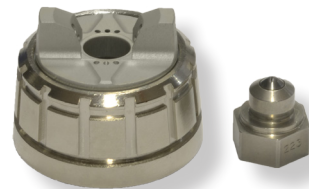
OPTIMA 21



CE  II 2GT6 X

TECHNICAL DATA

CODE	DESCRIPTION
TT1301OPN	Automatic Air Assisted Gun Mach 5 + Nozzle OPN +Air cap OPN
TT1MIXOPN	Air cap for nozzle Mix type Optima 2100
OPNXXX	Nozzle Mix type Optima 2100
TTK40580	Repair kit ON-OPN version



QUALITÀ PERFETTA, FINITURA PRECISA
PERFECT QUALITY, FINE FINISHING



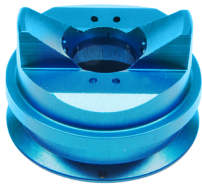
WAGNER

TECHNICAL DATA

CODE	DESCRIPTION
TT1301W	Automatic spray gun Mach5 + nozzle WGM + air cap WGM
TT1MIXW	Air cap for nozzle Mix type Wagner
WGMXXXX	Nozzle type Wagner
TTK4058W	Repair kit

CE  II 2GT6 X

Compatibile con le testine WA1001 e WA1002 e ghiera cappello aria WA1005
 Compatible with WA1001 and WA1002 air caps and WA1005 locknut



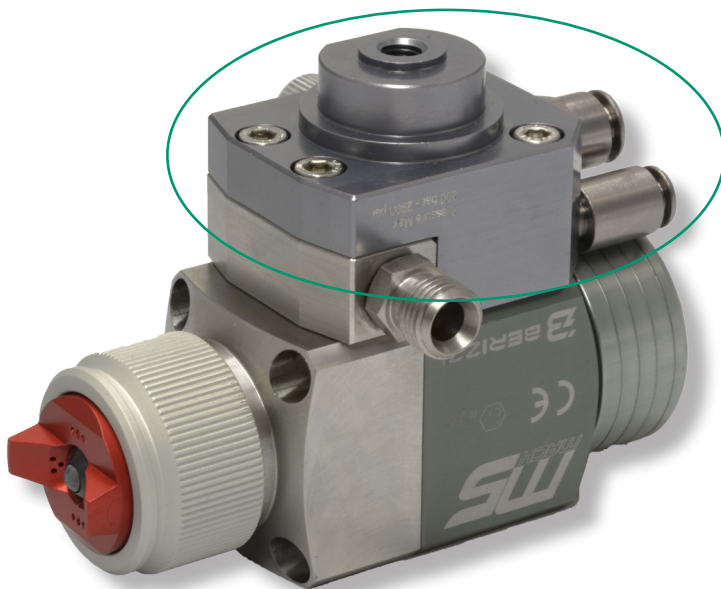
WA1001



WA1002



WA1005



MACH5 con supporto tipo CEFLA
MACH5 with CEFLA support

Può essere montato su tutte le pistole MACH5
For all MACH5 spray guns

CODE	DESCRIPTION
TT1301C	Mach5 with Cefla support + nozzle + air cap
TT1301KC	Mach5 with Cefla support + nozzle + air cap
TTK4058W	Mach5 with Cefla support + nozzle GWN + air cap GWN
TT1301ONC	Mach5 with Cefla support + nozzle ON + air cap ON
TT1301OPNC	Mach5 with Cefla support + nozzle OPN + air cap OPN
TT1301WC	Mach5 with Cefla support + nozzle WGM + air cap WGM

BERIZZI
 SPRAYING TECHNOLOGY

Via Torchio, 10 - 24034 Cisano Bergamasco (BG) - ITALY
 t. +39 0341 630184 - C.F. / P.IVA 03224470165
 info@berizzi.it - www.berizzi.it

