

AIR-ASSISTED AIRLESS NOZZLES - SIZES AVAILABLE



MIX NOZZLE

TTUXXX

Example: For a tip with .011mm and angle 30° order TTU311
 Sizes available in the following table. More sizes available on request

IN	MM	Angle	.007	.009	.011	.013	.015	.017	.019	.021
2-4	(50-102)	10°	107	109	111					
4-6	(102-152)	20°	207	209	211	213	215	217	219	221
6-8	(152-203)	30°	307	309	311	313	315	317	319	321
8-10	(203-254)	40°		409	411	413	415	417	419	421
10-12	(254-305)	50°		509	511	513	515	517	519	521
12-14	(305-356)	60°		609	611	613	615	617	619	621
14-16	(356-406)	70°			711	713	715	717	719	721
16-18	(406-457)	80°					815	817	819	821
18-20	(457-508)	90°						917	919	921



MIX NOZZLE TYPE BINKS

BNKXXX

Example: For a tip with .011mm and angle 30° order BNK311
 Sizes available in the following table. More sizes available on request

IN	MM	Angle	.007	.009	.011	.013	.015	.017	.019	.021
2-4	(50-102)	10°	107	109	111					
4-6	(102-152)	20°	207	209	211	213	215	217	219	221
6-8	(152-203)	30°	307	309	311	313	315	317	319	321
8-10	(203-254)	40°		409	411	413	415	417	419	421
10-12	(254-305)	50°		509	511	513	515	517	519	521
12-14	(305-356)	60°		609	611	613	615	617	619	621
14-16	(356-406)	70°			711	713	715	717	719	721
16-18	(406-457)	80°					815	817	819	821
18-20	(457-508)	90°						917	919	921

AIR-ASSISTED AIRLESS NOZZLES - SIZES AVAILABLE



MIX NOZZLE TYPE GRACO

GWNXXX

Example: For a tip with .011mm and angle 30° order GWN311
 Sizes available in the following table. More sizes available on request

IN	MM	Angle	.007	.009	.011	.013	.015	.017	.019	.021
2-4	(50-102)	10°	107	109	111					
4-6	(102-152)	20°	207	209	211	213	215	217	219	221
6-8	(152-203)	30°	307	309	311	313	315	317	319	321
8-10	(203-254)	40°		409	411	413	415	417	419	421
10-12	(254-305)	50°		509	511	513	515	517	519	521
12-14	(305-356)	60°		609	611	613	615	617	619	621
14-16	(356-406)	70°			711	713	715	717	719	721
16-18	(406-457)	80°					815	817	819	821
18-20	(457-508)	90°						917	919	921

MIX NOZZLE TYPE GRACO

GWN2XXX

Example: For a tip with .010mm and angle 30° order GWN2310
 Sizes available in the following table. More sizes available on request

IN	MM	Angle	.008	.010	.012	.014	.016
4-6	(102-152)	20°	208	210	212		
6-8	(152-203)	30°	308	310	312		
8-10	(203-254)	40°	408	410	412	414	416
10-12	(254-305)	50°		510	512	514	516
12-14	(305-356)	60°		610	612	614	616
14-16	(356-406)	70°		710	712	714	716

AIR-ASSISTED AIRLESS NOZZLES - SIZES AVAILABLE



MIX NOZZLE TYPE GRACO

GNNXXX

Example: For a tip with .011mm and angle 30° order GNN311

Sizes available in the following table. More sizes available on request

IN	MM	Angolo	.007	.009	.011	.013	.015	.017	.019	.021
2-4	(50-102)	10°	107	109	111					
4-6	(102-152)	20°	207	209	211	213	215	217	219	221
6-8	(152-203)	30°	307	309	311	313	315	317	319	321
8-10	(203-254)	40°		409	411	413	415	417	419	421
10-12	(254-305)	50°		509	511	513	515	517	519	521
12-14	(305-356)	60°		609	611	613	615	617	619	621
14-16	(356-406)	70°			711	713	715	717	719	721
16-18	(406-457)	80°					815	817	819	821
18-20	(457-508)	90°						917	919	921



MIX NOZZLE TYPE GRACO WITH PRE-ORIFICE

GN2XXX

Example: For a tip with .011mm and angle 30° order GN2311

Sizes available in the following table. More sizes available on request

IN	MM	Angolo	.008	.010	.012	.014	.016
4-6	(102-152)	20°	208	210	212		
6-8	(152-203)	30°	308	310	312		
8-10	(203-254)	40°	408	410	412	414	416
10-12	(254-305)	50°		510	512	514	516
12-14	(305-356)	60°		610	612	614	616
14-16	(356-406)	70°		710	712	714	716

AIR-ASSISTED AIRLESS NOZZLES - SIZES AVAILABLE



MIX NOZZLE TYPE WAGNER

WGMXXX

Example: For a tip with .011mm and angle 30° order WGM311
 Sizes available in the following table. More sizes available on request

IN	MM	Angle	.007	.009	.011	.013	.015	.017	.019	.021
2-4	(50-102)	10°	107	109	111					
4-6	(102-152)	20°	207	209	211	213	215	217	219	221
6-8	(152-203)	30°	307	309	311	313	315	317	319	321
8-10	(203-254)	40°		409	411	413	415	417	419	421
10-12	(254-305)	50°		509	511	513	515	517	519	521
12-14	(305-356)	60°		609	611	613	615	617	619	621
14-16	(356-406)	70°			711	713	715	717	719	721
16-18	(406-457)	80°					815	817	819	821
18-20	(457-508)	90°						917	919	921



MIX NOZZLE TYPE WAGNER WITH PRE-ORIFICE

WGM2XXX

Example: For a tip with .010mm and angle 30° order WGM2310
 Sizes available in the following table. More sizes available on request

IN	MM	Angle	.008	.010	.012	.014	.016
4-6	(102-152)	20°	208	210	212		
6-8	(152-203)	30°	308	310	312		
8-10	(203-254)	40°	408	410	412	414	416
10-12	(254-305)	50°		510	512	514	516
12-14	(305-356)	60°		610	612	614	616
14-16	(356-406)	70°		710	712	714	716

AIR-ASSISTED AIRLESS NOZZLES - SIZES AVAILABLE

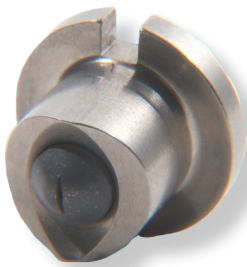


MIX NOZZLE TYPE OPTIMA

OPNXXX

Example: For a tip with .028mm and angle 30° order OPN328
 Sizes available in the following table. More sizes available on request

IN	MM	Angle	0.18 _{0.007}	0.23 _{.009}	0.28 _{0.011}	0.33 _{0.013}	0.38 _{0.015}	0.43 _{0.017}	.048 _{0.019}	.053 _{0.021}
4-6	(102-152)	20°	218	223	228	233	238	243	248	253
6-8	(152-203)	30°	318	323	328	333	338	343	348	353
8-10	(203-254)	40°	418	423	428	433	438	443	448	453
10-12	(254-305)	50°	518	523	528	533	538	543	548	553
12-14	(305-356)	60°	618	623	628	633	638	643	648	653



MIX NOZZLE TYPE OPTIMA

ONXXX

Example: For a tip with .028mm and angle 30° order ON328
 Sizes available in the following table. More sizes available on request

IN	MM	Angle	0.18 _{0.007}	0.23 _{.009}	0.28 _{0.011}	0.33 _{0.013}	0.38 _{0.015}	0.43 _{0.017}	.048 _{0.019}	.053 _{0.021}
4-6	(102-152)	20°	218	223	228	233	238	243	248	253
6-8	(152-203)	30°	318	323	328	333	338	343	348	353
8-10	(203-254)	40°	418	423	428	433	438	443	448	453
10-12	(254-305)	50°	518	523	528	533	538	543	548	553
12-14	(305-356)	60°	618	623	628	633	638	643	648	653

AIRLESS NOZZLES - SIZES AVAILABLE



FINE FINISH STANDARD NOZZLE

FFXXX

Example: For a tip with .010mm and angle 30° order FF310
 Sizes available in the following table. More sizes available on request

IN	MM	Angle	.008	.010	.012	.014	.016	.018	.020	.022	.024	.026	.028	.030	.032
2-4	(50-102)	10°	108	110											
4-6	(102-152)	20°	208	210	212	214	216	218			224				232
6-8	(152-203)	30°	308	310	312	314	316	318							
8-10	(203-254)	40°	408	410	412	414	416	418	420				428	430	432
10-12	(254-305)	50°	508	510	512	514	516	518	520	522			528	530	
12-14	(305-356)	60°	608	610	612	614	616	618	620	622	624	626	628		
14-16	(356-406)	70°	708	710	712	714	716	718							
16-18	(406-457)	80°	808	810	812	814	816	818	820	822	824	826	828		832
18-20	(457-508)	90°			912	914		918			924	926			



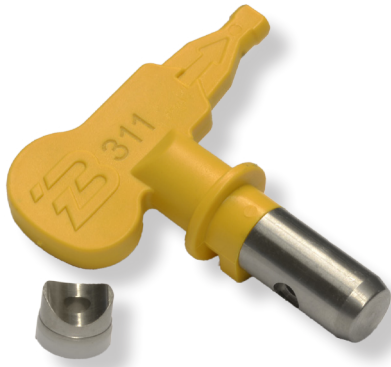
FINE FINISH NOZZLE TYPE GRACO

FIXXXX

Example: For a tip with .010mm and angle 30° order FIX310
 Sizes available in the following table. More sizes available on request

IN	MM	Angle	.008	.010	.012	.014	.016	.018	.020	.022	.024	.026	.028	.030	.032
2-4	(50-102)	10°	108												
4-6	(102-152)	20°	208	210	212	214	216	218			224				232
6-8	(152-203)	30°		310	312	314	316	318							
8-10	(203-254)	40°	408	410	412	414	416	418	420				428	430	432
10-12	(254-305)	50°		510	512	514	516	518	520	522			528	530	
12-14	(305-356)	60°		610	612	614	616	618	620	622	624	626			
14-16	(356-406)	70°			712	714	716	718							
16-18	(406-457)	80°				814	816	818	820	822	824	826	828		832
18-20	(457-508)	90°			912			918			924				

AIRLESS NOZZLES - SIZES AVAILABLE



REVERSIBLE TIP

FM6XXX

Example: For a tip with .011mm and angle 30° order FM6311
 Sizes available in the following table. More sizes available on request

IN	MM	A°	.007	.009	.011	.013	.015	.017	.019	.021	.023	.025	.027	.029	.031	.033	.035	.037	.039	.041	.043	.045	.047	.049	.051	.053	.055	.063	.065
2-4	(50-102)	10°		109	111	113	115	117																					
4-6	(102-152)	20°	207	209	211	213	215	217	219	221	223	225																	
6-8	(152-203)	30°	307	309	311	313	315	317	319	321	323	325	327	329	331	333	335	337	339	341	343								
8-10	(203-254)	40°	407	409	411	413	415	417	419	421	423	425	427	429	431	433	435	437	439	441	443	445	447	449	451	453	455		465
10-12	(254-305)	50°		509	511	513	515	517	519	521	523	525	527	529	531	533	535		539	541	543	545	547	549	551	553	555	563	565
12-14	(305-356)	60°		609	611	613	615	617	619	621	623	625	627	629	631	633	635		639	641	643	645	647	649	651	653	655	663	665
14-16	(356-406)	70°																											
16-18	(406-457)	80°				813	815	817	819	821	823	825	827	829	831	833	835		839	841	843								
18-20	(457-508)	90°						917	919	921	923	925	927	929	931	933	935		939	941	943								



REVERSIBLE AND PREATOMIZED TIP

FMC6XXX

Example: For a tip with .010mm and angle 30° order FMC6310
 Sizes available in the following table. More sizes available on request

IN	MM	Angle	.008	.010	.012	.014	.016	.018
2-4	(5-10)	10°	108	110	112	114		
4-6	(10-15)	20°	208	210	212	214		
6-8	(15-20)	30°	308	310	312	314		
8-10	(20-25.5)	40°	408	410	412	414		
10-12	(25.5-30.5)	50°		510	512	514	516	518
12-14	(30.5-35.5)	60°			612	614	616	618

AIRLESS NOZZLES - SIZES AVAILABLE



REVERSIBLE LINE MARKING TIP

FMLMXXX

Example: For a tip with .013mm and angle 20° order FMLM213
 Sizes available in the following table. More sizes available on request

IN	MM	Angle	.013	.015	.017	.019	.021	.023	.025	.027	.029	.031	.035
4-6	(10-15)	20°	213	215	217	219							
6-8	(15-20)	30°		315	317	319	321	323	325	327	329	331	
8-10	(20-25.5)	40°			417	419	421	423	425	427	429	431	435
12-14	(30.5-35.5)	60°					621	623	625	627	629	631	635



RAC5 REVERSIBLE TIP

FM6XXX

Example: For a tip with .011mm and angle 30° order RACV311
 Sizes available in the following table. More sizes available on request

IN	MM	A°	.007	.009	.011	.013	.015	.017	.019	.021	.023	.025	.027	.029	.031	.033	.035	.037	.039	.041	.043	.045	.047	.049
2-4	(50-102)	10°		109	111	113	115		119															
4-6	(102-152)	20°	207	209	211	213	215	217	219	221	223	225					235							
6-8	(152-203)	30°	307	309	311	313	315	317	319	321	323	325	327		331									
8-10	(203-254)	40°		409	411	413	415	417	419	421	423	425	427	429	431	433	435	439	443		451	455		
10-12	(254-305)	50°		509	511	513	515	517	519	521	523	525	527	529	531	533	535		543		551	555	563	
12-14	(305-356)	60°		609	611	613	615	617	619	621	623	625	627	629	631	633	635			645		655		665
14-16	(356-406)	70°								721	723	725		729			735							
16-18	(406-457)	80°					815	817	819	821			827		831	833	835							
18-20	(457-508)	90°						917									935							